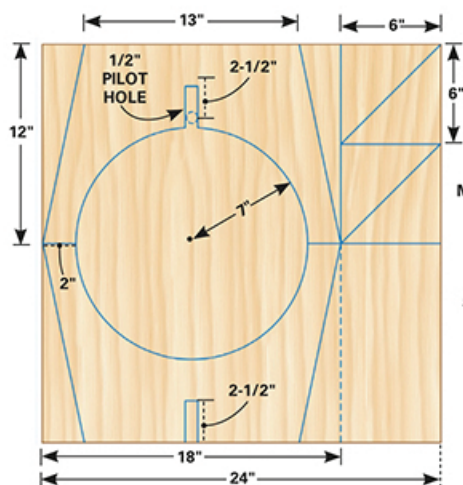
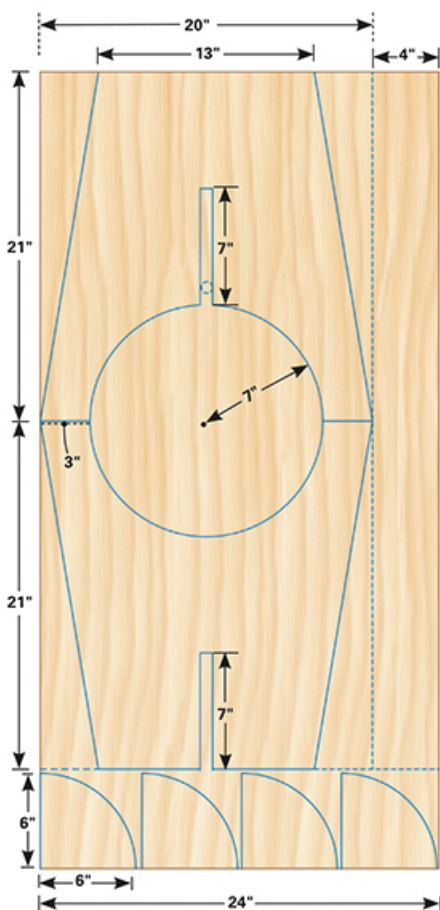
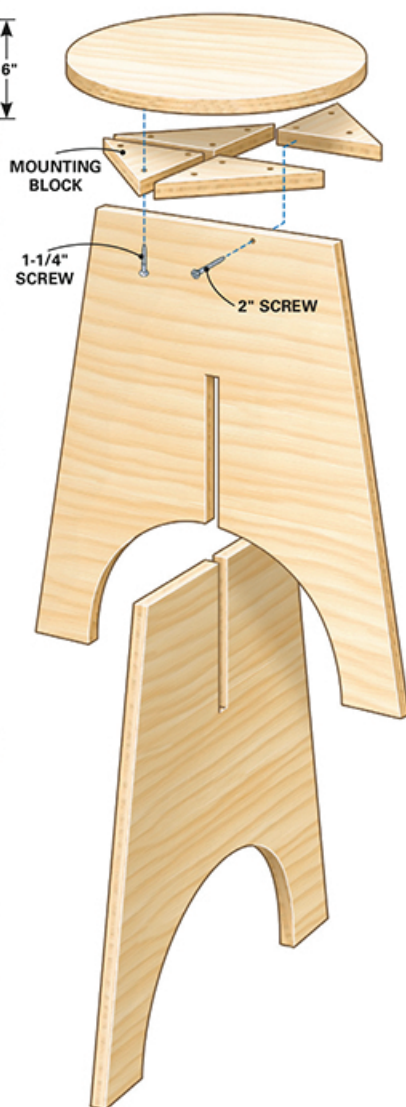


**Figure A**Jigsaw stool plywood layout  
(short version)**Figure B**Jigsaw stool plywood layout  
(tall version)**Figure C**Jigsaw stool assembly  
(tall version)**Overall dimensions**

Short version:

18" W x 18" D x 12-3/4" H

Tall version:

20" W x 24" D x 21-3/4" H

**Materials List**

Short stool: 3/4" x 24" x 24" plywood

Tall stool: 3/4" x 24" x 48" plywood

1-1/4" screws, 2" screws, wood glue